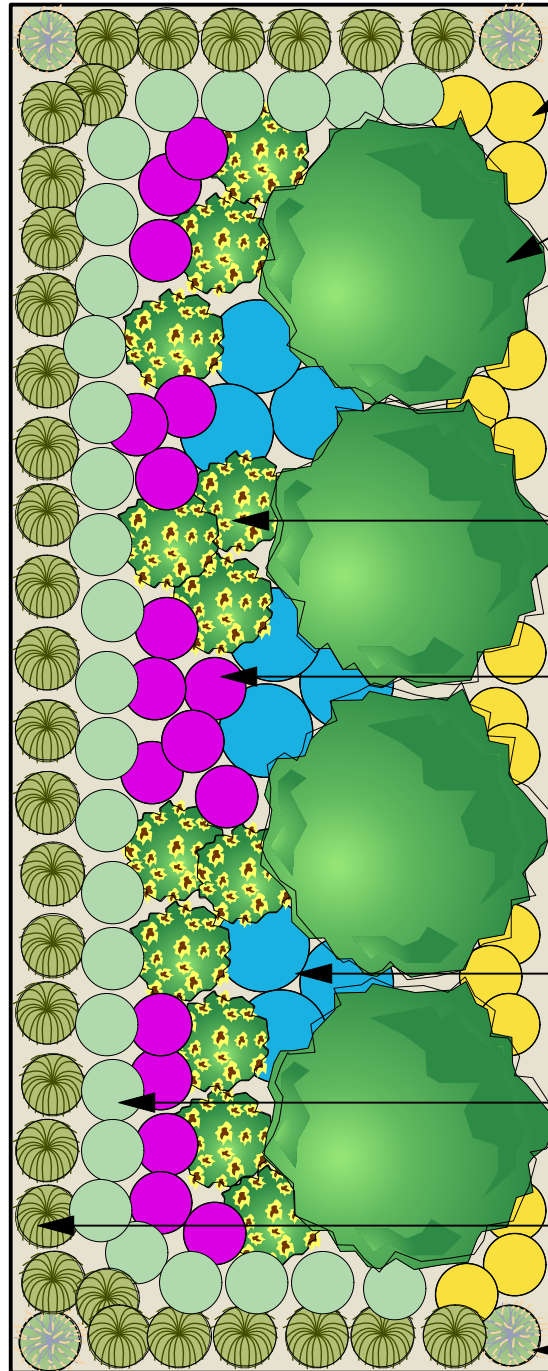


Entry walk

S
i
d
e
w
a
l
k



Packera aurea
Golden Ragwort

Ilex glabra 'Shamrock'
Inkberry 'Shamrock'

Rudbeckia hirta or
Rudbeckia fulgida
Black-eyed Susan or
Orange Coneflower

Geranium maculatum
Wild Geranium

Symphotrichum
oblongifolium 'October
Skies'

Aromatic Aster 'October
Skies'

Tiarella cordifolia
Heartleaf Foamflower

Carex rosea
Rosy Sedge

Deschampsia Cespitosa
Tufted Hairgrass

7'-6"

Entry walk

Title Lakelands Design Template		
Scale 3/8" = 1'0"	Drawn By L. Hubbard	Date 10-8-2020
CAD File Name Lakelands Sample Design		

Butterfly Commons at the Lakelands Plant List with Optional species

Installed or optional:	<i>Latin name</i>	Common name	Bloom time	Color	Sun	Moisture	Height (ft)	Attribute
Installed	<i>Carex rosea</i>	Rosy sedge	April- May	green	part sun - shade	med - dry	1	evergreen/winter interest/texture
Installed	<i>Deschampsia cespitosa</i>	Tufted hairgrass	July-September	tones of gold, silver, purple and green	sun - part shade	wet - med	2-3	winter interest/texture
Installed	<i>Geranium maculatum</i>	Wild geranium	April-May	Pink	sun - shade	med - med dry	1.5-2	Spring bloom
Installed	<i>Ilex glabra 'Shamrock'</i>	Inkberry dwarf	May-June	white - minor	sun - part shade	wet - med	3-4'	Evergreen shrub
Installed	<i>Iris versicolor</i>	Blue flag iris	May-June	blue	sun - part sun	wet - med. dry	2-2.5	Used in high water flow areas.
Installed	<i>Packera aurea</i>	Golden ragwort	April	yellow	sun - shade	med - dry	.5-2.5	Evergreen ground cover under shrubs
Installed	<i>Rudbeckia hirta</i>	Black eyed susan	June-September	yellow	sun - part sun	med wet - dry	1-3	Early summer bloom, can handle wetter conditions. Biennial
Installed	<i>Rudbeckia fulgida "deamii"</i>	Orange coneflower	June-October	yellow	sun - part sun	med wet - med dry	2-3	Early summer bloom. Perennial.
Installed	<i>Symphotrichum oblongifolium 'October skies'</i>	Aromatic aster	August-October	blue	sun	med - dry	1-3	Late season bloom.
Installed	<i>Tiarella cordifolia</i>	Foam flower	May	white	part shade - shade	med	.75-1	Semi-evergreen/bronze - ground cover
Optional	<i>Eurybia divaricata</i>	White wood aster	August-October	white	part shade - shade	med - dry	1-2.5	Late season bloom
Optional	<i>Lobelia siphilitica</i>	Great blue lobelia	July-September	blue	sun - part shade	wet - med	2-3'	Summer bloom, unique flower.
Optional	<i>Solidago caesia</i>	Blue stem goldenrod	August-October	yellow	part sun - shade	med - dry	1.5-3	Late season bloom
Optional	<i>Symphotrichum cordifolium</i>	Blue wood aster	August-October	blue	part sun - shade	med - dry	2-5	Semi-evergreen late season bloom